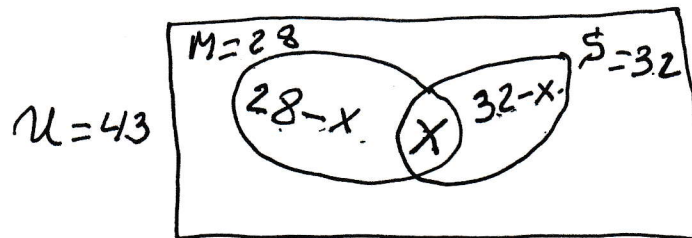


Section 2.2, # 27

$$U = 43, \quad M = 28, \quad S = 32$$

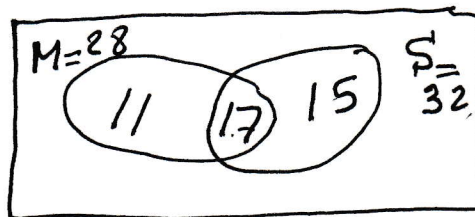
Method 1



$$(28-x) + x + (32-x) = 43$$

$$60 - x = 43$$

$$x = 60 - 43 = \underline{\underline{17}}$$



Money only = 11
Stock only = 15

Method 2

$$M \cup S = M + S - M \cap S$$

$$43 = 28 + 32 - M \cap S$$

$$43 = 60 - M \cap S$$

$$M \cap S = 60 - 43 = 17$$